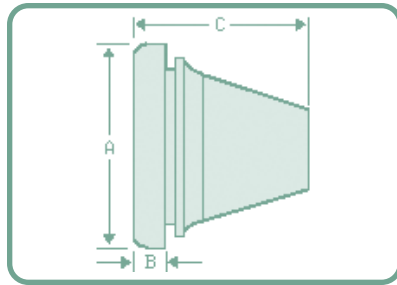
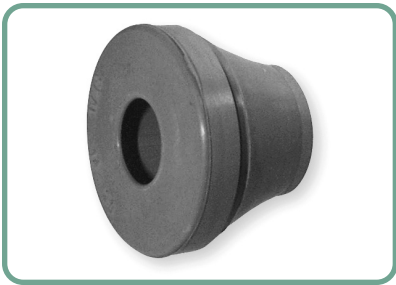




## Snap-In Liquid Tight Grommets



Gray moulded EPDM grommet is fire tested to FMVSS 302, vehicle safety norm 302 (DIN 75200) to provide light strain relief to the cable. Material hardness 50 shore A.

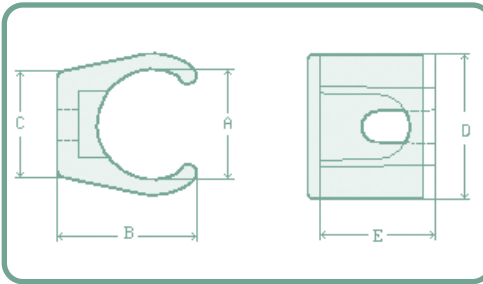
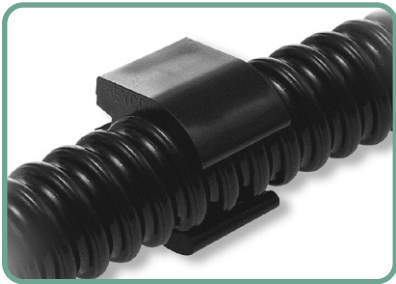
Just snap into place, pierce thin membrane, insert and pull back cable. Protection Class IP 67 per EN60529.

Part No.	Cable Diameter Range	Panel Hole Diameter	Panel Thickness Range	A Head Diameter	B Head Thickness	C Overall Length
LTB30-50	.12 -.20	.52	.04 -.16	.79	.27	.50
LTB50-70	.20 -.28	.63	.04 -.16	.79	.23	.79
LTB70-100	.28 -.39	.75	.04 -.16	.94	.23	.83
LTB100-140	.39 -.55	.91	.04 -.16	1.10	.25	.93
LTB140-200	.55 -.79	1.14	.04 -.16	1.34	.26	1.02
LTB200-260	.79 -1.02	1.50	.04 -.16	1.81	.27	1.18
LTB260-350	1.02 -1.38	1.89	.04 -.16	2.26	.31	1.42

Standard Colour: Gray.



## Mounting Brackets



Used to mount liquid tight conduit or tubing securely into place, vertically or horizontally.

Only fingertip pressure is required. Low profile design for pleasing appearance and space saving.

Recommended distance between brackets: intervals not greater than 3 ft.

Use one standard #10 screw (not included) to attach bracket to panel or chassis.

Part No.	Trade Size	A Inside Diameter	B Length	C Height	D Outside Diameter	E Width
HFB3/8	3/8	.71	.91	.69	.91	.75
HFB1/2	1/2	.84	1.07	.70	1.05	.75
HFB3/4	3/4	1.05	1.26	.73	1.26	.75
HFB1	1	1.32	1.51	.89	1.52	.75

Standard Colour: Black. Gray also available.