

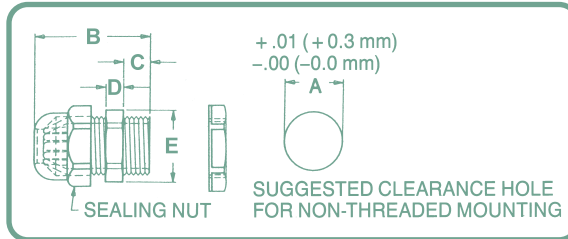
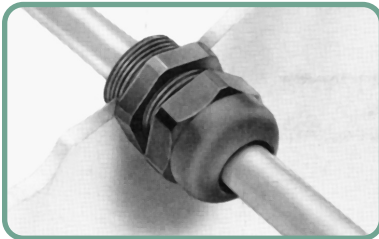


Straight-Thru Liquid Tight Fittings

All nylon construction with BUNA-N compression gland resists salt water, weak acids, gasoline, alcohol, oil, grease and common solvents. Fittings install in either clearance or threaded holes. Acme threads prevent skipping and speed installation. The domed sealing nut resists snags and sheds contaminants. An internal ratchet provides self-locking against vibration.

Working temperatures: -22°F (-30°C) to 212°F (100°C). For short periods to 302°F (150°C). Protection class IP 68 per DIN 40050 up to 70 psi (5 bar) water pressure. Available in metric.

PG HUBS FOR FLEXIBLE CORDS (LOCKNUTS INCLUDED)



INSTALLATION NOTE:
For optimum liquid tightness, use fitting with the **smallest maximum diameter** that will still fit your application.

Part No.		Cable Dia. Range Min.- Max.	Thread Type & Size	A Clearance Hole	B Max. O.A. Length	C Thread Length	D Wrenching Nut Thick.	E Wrenching Flats
Black	Gray							
3207 3444	3208 3445	.114 -.250 .064 -.210	Pg 7	.492	1.17	.33	.20	.59
3210 3446	3211 3447	.181 -.312 .069 -.187	Pg 9	.599	1.30	.34	.20	.75
3213 3448	3214 3449	.230 -.395 .069 -.250	Pg 11	.733	1.46	.39	.20	.86
3216	3217	.170 -.450	Pg 13.5	.804	1.53	.41	.20	.95
3219	3220	.230 -.530	Pg 16	.886	1.66	.45	.23	1.05
3222 3454	3223 3455	.450 -.705 .250 -.490	Pg 21	1.115	1.87	.52	.23	1.30
3225	3226	.590 -.990	Pg 29	1.470	2.23	.59	.28	1.66
M3204 M3206	M3205 M3203	.875 -1.260 .787 -1.020	Pg 36	1.850	2.52	.51	.32	2.09
3212 3218	-- --	1.260 -1.496 .984 -1.220	Pg 42	2.125	2.64	.51	.36	2.36
3281 3283	-- --	1.457 -1.732 1.142 -1.378	Pg 48	2.335	2.72	.55	.36	2.56

To order locknuts separately, see page 92.



Straight-Thru Liquid Tight Fittings CONTINUED

NPT HUBS FOR FLEXIBLE CORDS (LOCKNUTS NOT INCLUDED)

Part No.		Cable Dia. Range Min.-Max.	Thread Type & Size	A Clearance Hole	B Max. O.A. Length	C Thread Length	D Wrenching Nut Thick.	E Wrenching Flats
Black	Gray							
†M4516	†M4517	.115 -.250	1/4 NPT	.540	1.28	.45	.21	.63
†M4514	†M4515	.065 -.210						
3228	3229	.181 -.312	3/8 NPT	.670	1.49	.53	.20	.75
3458	3459	.069 -.187						
3200	3201	.230 -.546	1/2 NPT	.875	1.83	.62	.20	.95
3231	3232	.170 -.470						
3234	3235	.450 -.709	3/4 NPT	1.068	1.97	.63	.23	1.30
3460	3461	.250 -.485						
†8437	†8438	.590 -1.00	1 NPT	1.350	2.41	.75	.28	1.65
†M8439	†M8440	.472 -.787						
†M4524	†M4525	.875 -1.260	1 1/4 NPT	1.680	2.69	.78	.30	2.05
†M4522	†M4523	.787 -1.020						

To order locknuts separately, see page 92.

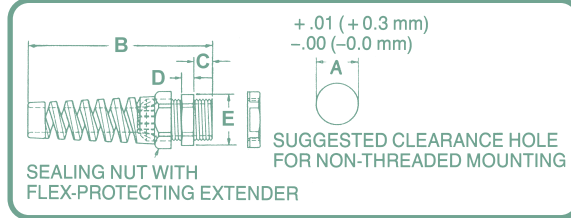
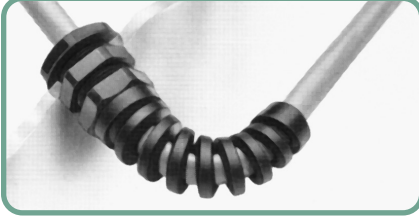
†US and Foreign Patents Pending.

*All straight-thru fittings are also available
in metric hubs.
Tell us what you need.*



Pigtail™ Liquid Tight Fittings

PG HUBS FOR FLEXIBLE CORDS (LOCKNUTS INCLUDED)



The Pigtail™ fitting has a flexible extender to prevent sharp bends and extend cable life.

Acme threads on body prevent skipping and speed installation. Also available in metric.

Part No.		Cable Dia. Range Min.- Max.	Thread Type & Size	A Clearance Hole	B Max. O.A. Length	C Thread Length	D Wrenching Nut Thick.	E Wrenching Flats
Black	Gray							
3237	3238	.114 -.250	Pg 7	.492	2.44	.33	.22	.59
3464	3465	.064 -.210						
3240	3241	.181 -.312	Pg 9	.599	2.77	.34	.20	.75
3466	3467	.069 -.187						
3243	3244	.230 -.395	Pg 11	.733	3.44	.39	.20	.86
3468	3469	.069 -.260						
3246	3247	.170 -.450	Pg 13.5	.804	3.88	.41	.20	.95
3249	3250	.230 -.546	Pg 16	.886	4.36	.45	.23	1.05
3245	3248	.450 -.709	Pg 21	1.115	5.03	.52	.23	1.30
3478	3479	.250 -.485						

To order locknuts separately, see page 92.

NPT HUBS FOR FLEXIBLE CORDS (LOCKNUTS NOT INCLUDED)

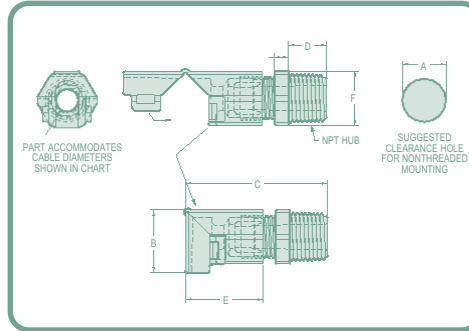
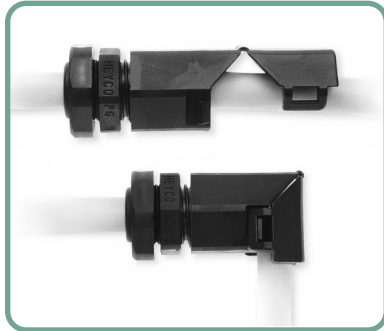
Part No.		Cable Dia. Range Min.- Max.	Thread Type & Size	A Clearance Hole	B Max. O.A. Length	C Thread Length	D Wrenching Nut Thick.	E Wrenching Flats
Black	Gray							
3254	3255	.181 -.312	3/8 NPT	.670	2.97	.53	.20	.75
3474	3475	.069 -.187						
3251	3252	.170 -.470	1/2 NPT	.875	4.09	.62	.20	.95
3266	3267	.230 -.546						
3239	3242	.450 -.709	3/4 NPT	1.068	5.14	.63	.23	1.30
3462	3463	.250 -.485						

To order locknuts separately, see page 92.



Right-Angle Liquid Tight Fittings

PG HUBS FOR FLEXIBLE CORDS (LOCKNUTS INCLUDED)



Each cordgrip is moulded in the open position for ease of installation. After cable insertion, the fitting snaps closed, bending the cable without damage, saving considerable time and money.

Part design provides liquid tight integrity even in the open position. Acme threads on body prevent skipping and speed installation. All-nylon with TPE gland, resists salt water, weak acids, gasoline, oil, alcohol, grease and common solvents. This feature is not assessed by UL certification and testing.

Available in metric.

Part No.		Cable Dia. Range Min.-Max.	Thread Type & Size	A Clearance Hole	B Right Angle Angle Ht.	C (Closed) Max. O.A Length	D Thread Length	E Sealing Nut Length	F Wrenching Flats
Black	Gray								
†M8530	†M8531	.062 -.210	PG7-90	.492	.69	1.53	.33	.86	.59
†M8532	†M8533	.114 -.250							
†M8534	†M8535	.069 -.187	PG 9-90	.599	.88	1.77	.34	1.07	.75
†M8536	†M8537	.181 -.305							
†M8538	†M8539	.078 -.260	PG11-90	.733	.99	1.99	.39	1.23	.86
†M8540	†M8541	.230 -.375							
†M4542	†M4553	.095 -.260	PG13.5-90	.804	1.06	2.20	.41	1.38	.95
**M8542	**M8543	.170 -.470							

To order locknuts separately, see page 92.

NPT HUBS FOR FLEXIBLE CORDS (LOCKNUTS NOT INCLUDED)

Part No.		Cable Dia. Range Min.-Max.	Thread Type & Size	A Clearance Hole	B Right Angle Angle Ht.	C (Closed) Max. O.A Length	D Thread Length	E Sealing Nut Length	F Wrenching Flats
Black	Gray								
†M4560	†M4561	.065 -.220	1/4-90 NPT	.540	.69	1.66	.45	.86	.63
†M4562	†M4563	.115 -.250							
†M8560	†M8561	.069 -.187	3/8-90 NPT	.670	.88	1.96	.53	1.07	.75
†M8562	†M8563	.181 -.305							
†M4564	†M4565	.095 -.260	1/2-90 NPT	.875	1.06	2.40	.62	1.38	.95
**M8564	**M8565	.170 -.450							

To order locknuts separately, see page 92.

†US and foreign patents pending.

**UL Listed Underwriters Laboratories.