



# Pipe Thread Protectors



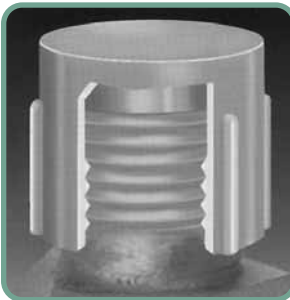
Both open end and closed end protectors are made to completely cover the threads of conduit pipe.

Smooth sided caps are designed to work well with automatic vibrating feeders; they use an internal bead to hold on tight when the handling gets rough.

Major producers of iron, steel and aluminum pipe and tubing use these unique protectors for safer, damage-free shipments.



## STANDARD THREADED CAPS



Ribbed, threaded caps provide durable protection for male threads on standard threaded studs and fittings.

Because of their excellent seal, they are a popular mask for painting and plating.

## THREADED PIPE PLUGS



**Threaded Square Head** - hollow threaded plug prevents damage to tapped holes and provides low-cost protection (less than metal) during low pressure testing, shipping or in-plant handling. Durable plug is easily tightened with fingers or wrench.

**Flanged Square Head** - hollow threaded plug locks into position for an extra-tight seal due to flanged sealing surface and cannot be forced through opening. Plug will withstand testing at a higher pressure than standard threaded plug and offers low cost protection against damage of tapped holes.

**Hexagonal Socket** - a solid threaded plug offering exceptional strength as a temporary or permanent closure. Hex socket accepts standard Allen wrench sizes for easy tightening.