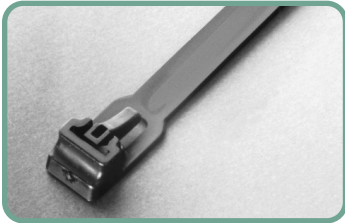




# Nylon Cable Ties CONTINUED

## RELEASABLE

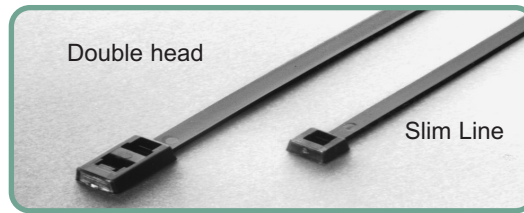
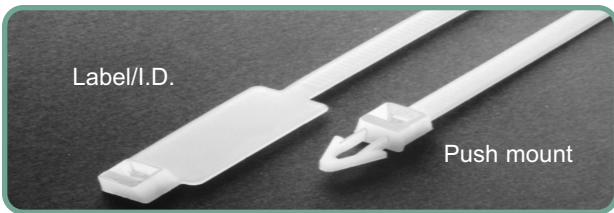


Ideal for use in prototype construction and in areas requiring servicing or addition of wires in existing situations.

Part No.	Overall Length	Maximum Bundle Diameter	Tensile Strength (lbs.)
RT 5-50	5-1/2	1-1/4	50
RT 6-50	6-1/2	1-3/8	
RT 8-50	8-1/2	2	
RT 9-50	10	2-1/2	
RT 15-150	15	4	175
RT 21-150	21	6	
RT 32-150	32	9	
RT 9-250	9	2	250
RT 20-250	20	5	
RT 22-250	23	6	
RT 29-250	29	8	
RT 35-250	35	10	
RT 41-250	40	12	

Minimums available on request.

## BAR-LOK®



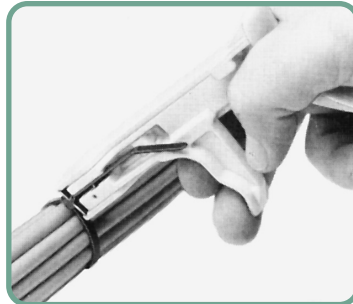
Part No.	Type	Length	Maximum Bundle Diameter	Min. Tensile Strength (lbs)
D 10325	Slim Line	8	2.125	18
D 10425	Double Head	7.5	1.750	50
D 10430	Double Head	11	3.000	50
D 8412	Label / I.D.	4	.875	18
D 8413	Label / I.D.	7.5	1.750	50
D 8414	Push Mount	7.5	1.750	50
D 10355	Push Mount	11	3.000	50

Minimum order 1000.  
Packed in bags of 1000 only.

## ➤ Nylon Cable Tie Tensioning Tools



Part No. 0998



Part No. 0999

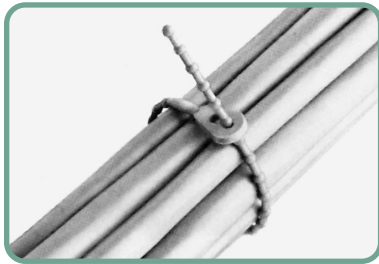
### Part No. 0998

The standard tool fits all standard duty ties. Metal construction has three tension settings and automatically trims excess.

### Part No. 0999

Use the "Twist Trim Tool", for standard duty ties. Low cost, durable construction. Tightens conventionally, then trims with a twist of the wrist. Also available in heavy-duty version.

## ➤ Beaded Ties



Releasable and re-useable ties for easy binding, closing, bagging, holding and tying. Available in two materials: polyethylene for high flexibility and moderate strength, and nylon for less flexibility and more strength with high resistance to temperature and chemicals.

Polyethylene ties are stocked in red and

available in natural, black, blue, and yellow. Nylon ties are stocked in natural and also available in black. Please specify colour when ordering.

An adhesive backed mounting platform (Part No. **MPBTA**) is also available. Moulded of natural nylon, it may also be screw mounted.

Part No.	Overall Length	Max. Bundle Diameter	Tensile Strength (lbs.)	Min. Order Qty.
<b>Polyethylene</b>				
4E	4-5/32	1-1/8	10	1,000
5E	5	1-3/8	10	1,000
6E	6-1/2	1-7/8	18	1,000
8E	8-11/16	2-1/2	18	1,000
10E	10-11/16	3	18	1,000
14E	14	4	18	500
<b>Nylon</b>				
4N	4-1/4	1-1/8	40	1,000
5N	5-3/32	1-3/8	40	1,000
6N	6-19/32	1-7/8	75	1,000
8N	8-7/8	2-1/2	75	1,000
10N	10-27/32	3	75	1,000
14N	14	4	75	500