



Screw-In Nylon Wall Anchor



Self-drilling point cuts right into 3/8"-5/8" drywall by simply screwing it in. Flush, low profile, phillips countersunk head to be used in combination with a self-tapping screw or screw eye.

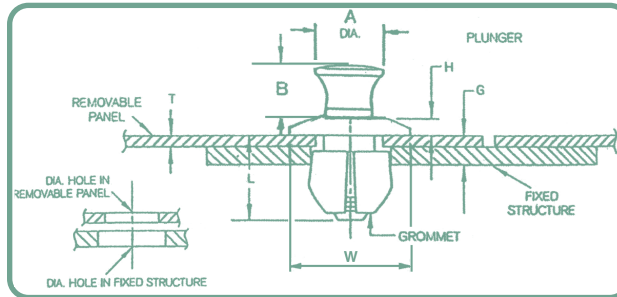
No pre-drilling of hole required. Deep coarse threads create strong engagement and hold. Replaces plastic conical anchors where more strength is required. Minimum required screw length for both #6 and #8 is 3/4".

Available in natural nylon.

Part No.	Screw Size	Length
WAZ 6	#6	1-5/16
WAZ 8	#8	1-11/16



Snap Latch Fasteners



Use these versatile fasteners when fast, simple latching is needed in metal, wood and synthetics. They install and operate in seconds without the need for tools. They can even compensate for mislocated or mismatched holes. Ideal for rush jobs in the field.

Grommet

Plunger

Part No.	Sheet		Capacity		H	L	W Dia.	Hole Diameter		A	B
	T Max.	G Min.	G Max.	H				Remov. Panel	Fixed Structure		
SL 809	.065	.084	.173	.06	.38	.335	.242 -.238	.254 -.250	.28	.10	
SL 810	.065	.084	.173	.06	.38	.335	.242 -.238	.254 -.250	.32	.27	
SL 1010	.098	.118	.207	.062	.44	.425	.299 -.294	.323 -.316	.36	.25	